



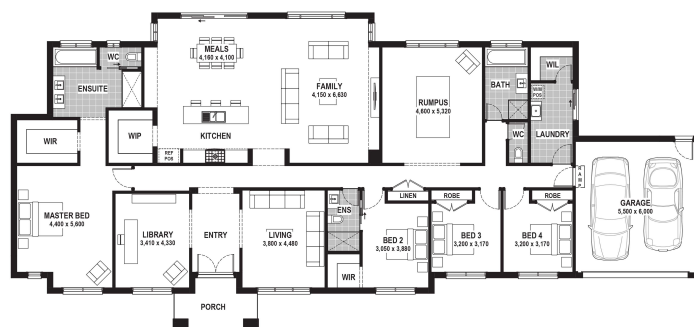
Facade: Villa

House: 36.84 sq **Land:** 4501 m2



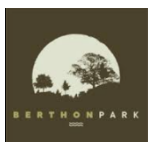
Inclusions

- Bluescope Steel House Frame
- Colorbond Roof with Sarking
- 7 Star Energy Efficient
- European-styled (uPVC) Double Glazed Windows & Doors
- 900mm Rangehood & Upright Cooker
- Overhead Cupboards to Kitchen
- Tiled Shower Bases
- Window Locks to all Openable Windows
- Remote Garage Door with Openers
- Bushfire Compliance up to BAL 12.5
- 50 Year Structural Guarantee
- 2550mm Ceiling Height
- Caesarstone Benchtops to Kitchen & Vanities
- Developer Guidelines Included
- Laminate Flooring & Carpet Throughout
- NBN Fibre Package
- Site Costs Allowance Included



Contact:

Christian Keepen
0437 853 822
houseandland@jgking.com.au



*Conditions apply. Speak to your New Home Advisor for further details